

无锡市赛博机电有限公司是一家专业研发、生产及销售直线导轨、轴承和配套精密零部件等产品的机械企业。公司秉持“责任、创新、卓越”的企业精神，经多年市场调研、产品开发、客户反馈等积累，现已逐步成长为国内机械传动行业的先行者和领航者。其旗舰性的超薄壁轴承与小轴径双轴心导轨产品均已获得专利权，在结构设计和加工工艺上也已达到了国际先进水平。

我公司产品广泛应用于机械加工、医疗器械、激光设备、喷涂设备、检测仪器等领域，公司凭借雄厚的技术实力和完善的服务，产品已被多家世界500强企业使用及认可，到目前为止，SAIBO产品已经销往30多个国家和地区。

我公司现本着“以国产价格实现进口品质”的原则，真诚面对广大国内客户。SAIBO将为您的选择和信任提供超乎您期望的产品和服务！

SAIBO design and produce Linear Guide, Bearing and precision Mechanical components etc. Depend on many years' experience of market, products explore, customer services, we developed into one of the leader companies in power transmission area and formed our company's culture of Responsibility, Innovation and Excellence. Our competitive products' (Super-slim bearing and linear guide) structure design and quality already reached international advanced level and got patent certificate.

SAIBO products are already widely used in the area of machinery, medical equipment, laser equipment, spay and painting equipment, testing instrument etc. Our products are sold to more than over 30 countries. Now several world top 500 companies approve and use our products. Select SAIBO, you will reach far beyond expectation.

3



SB-LGA导轨

7



SB-LGB导轨

9



SB-LGC导轨

11



SB-LGV导轨

15



直线轴

直线轴 SHAFT

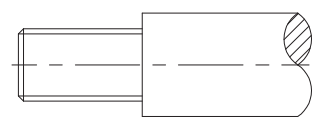


产品特性

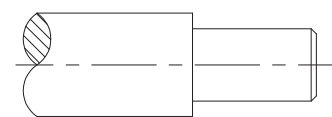
轴类零件广泛应用于电机，工业机器人，激光雕刻机，木工机械，塑胶机械，打印机，油（气）缸等各类机电产品。我公司可根据客户要求选用高碳钢，轴承钢和不锈钢等材料生产高精度轴类零件，并提供如下所示的机械加工：

Features

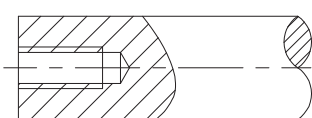
Shafts are widely used in industry many areas such as motor, robotics, laser carve machine, woodworking machine, plastic machine, printing machine, Hydraulic (Pneumatic) cylinder etc. We make all kinds of high precision shafts with different material such as high-carbon steel, chromic steel and stainless steel. If required, below treatment is available:



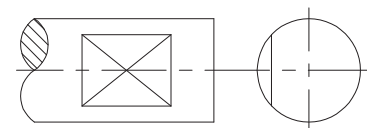
车外螺纹 Screw



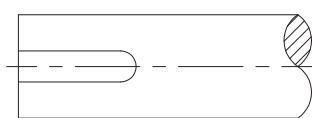
台阶轴 Ladder



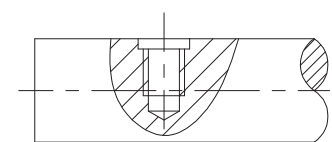
轴端螺纹孔 Screw hole



铣平面 Plane

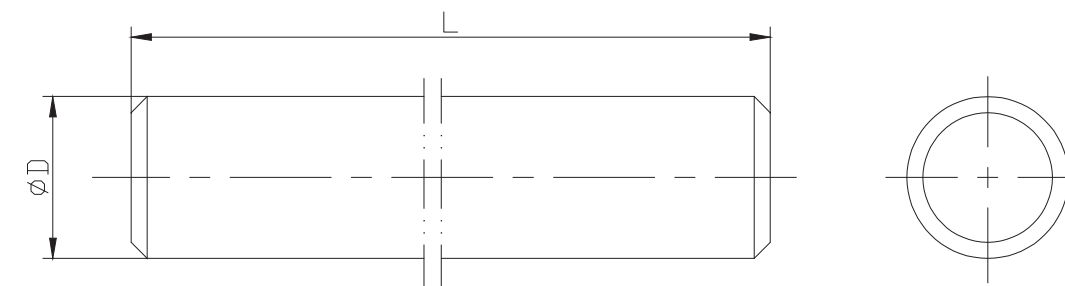


铣键槽 Keyway



径向打孔 Hole

基本尺寸 Dimension



直径 Diameter (mm)	常用公差 Normal Tolerance μm *	直线度 Straightness um/m	有效硬化层深度 Hardened Surface Depth mm	单位重量 Weight kg/m	最大长度L Max Length mm
3	-2~-8	60~100	≥1.0	0.06	300
4				0.10	500
5	-4~-12			0.16	1000
6				0.22	1000
8	-5~-14			0.40	2000
10				0.62	2000
12	-6~-17	100~150	≥1.5	0.89	2000
13				1.05	2000
16				1.59	3000
20				2.48	4000
25	-7~-20			3.88	4000
30				5.58	4000
35	-9~-25			7.60	4000
40				9.93	4000
50				15.51	4000
60	-10~-29			22.34	4000
80				39.71	4000

材料：高碳钢 轴承钢(铬钢)，硬度：60±2HRC

\* 公差：以上列出的是g6公差，其它的公差可以订做

Material: High-carbon steel or chrome steel can be selected. Hardness: 60±2HRC

Tolerance: Other than g6 are available